

Switching From Metaswitch

François Caron / Darren Landry

Sr. Dir. Product / Sales Engineering



Microsoft in Telecom - Background

- Azure for Operators business – 2020
- Strategic goal: move workloads to Azure
- Telco Public Cloud adoption speed
- Microsoft exit – 2024



You Might Have Less Time Than You Think

- Am I still supported?
- What's the future here?
- What Support will I get?



B B C

Register

Sign In

'I'm next, I need to save myself': Why layoffs cause other workers to quit

7 August 2023

Share  Save 

Alex Christian
Features correspondent



Ribbon The Only Vendor That Can Match Metaswitch Portfolio

Employee Engagement

Employee Engagement Blog

Workplace Collaboration

Microsoft Done with Metaswitch? Which Vendors Stand to Gain



Diane Myers



“Ribbon will be the big winner in all of this. First, it has the product and service expertise to manage Class 5 replacement products. It is the only vendor that can match the Metaswitch product portfolio of softswitches, gateways, SBCs, and app server for consumer services.”

Investments to Streamlined Deployment and Operations

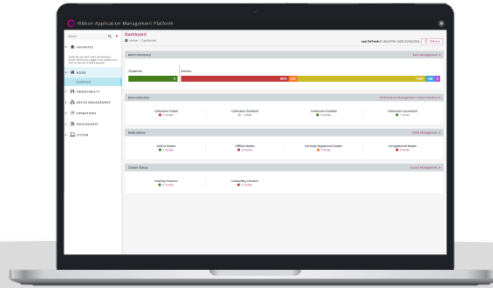
Monitor and Secure



Ribbon Analytics

Secure and monitor networks with service assurance and deep network insights

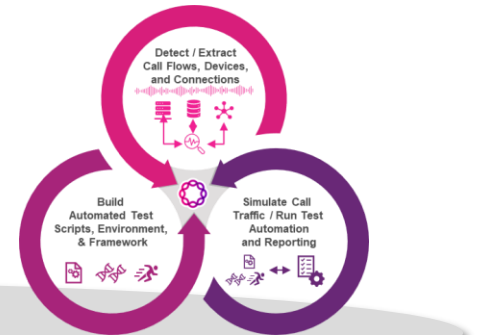
Streamline Network Management



RAMP

Streamline network management, forecast network growth, and troubleshoot network issues while reducing operational costs

Deploy with Confidence



LEAP

Upgrade with confidence and ensure network compatibility, while mitigating risk through test automation.

clm

Indicações

Valor	Qu...	Agr...	Data	Valor	Q...	Agr...	Data	Valor	Q...	Agr...	Data
DOLFUT 186,95											
Var... Fechament...											
1,0%				5.857,10							
2,5%				5.828,06							
2,0%				5.800,23							
1,5%				5.771,80							
1,0%				5.743,37							
0,5%				5.714,93							
				5.686,50							
-0,5%				5.658,07							
-1,0%				5.629,64							
-1,5%				5.601,20							

Relógio

09:40:24

Preço	Quantidade	Compra	Qtd. C...	Preço	Qtd. V...	Venda	Volume at P...	Volume at P...
5.690,50	44,37k							
5.690,00	52,25k							
5.689,50	50,92k							
5.689,00	52,97k							
5.688,50	53,24k							
5.688,00	62,24k							
5.687,50	57,06k							
5.687,00	48,58k							
5.686,50	33,61k							
5.686,00	39,42k							
5.685,50	43,68k							
5.685,00	47,40k							
5.684,50	43,35k							
5.684,00	41,43k							
5.683,50	37,11k							
5.683,00	37,99k							
5.682,50	32,72k							
5.682,00	31,44k							
5.681,50	24,10k							
5.681,00	21,82k							

Versão 5.0.0.228 64 Bits

FRESH PRINTS.

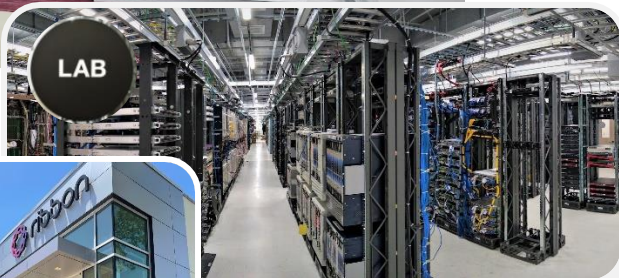
NO VACANCY

Experts in Network Transformation



Ribbon modernizes networks for **service providers, enterprises, and critical infrastructure sectors** by delivering security, scalability, and interoperability through our portfolio of cloud communications solutions.

Headquarters: **Plano, Texas** • NASDAQ: **RBBN**



1000+
Customers

55M+

Ports (Lines and Trunks) Migrated

30+

Different Switch Technologies Migrated

4000

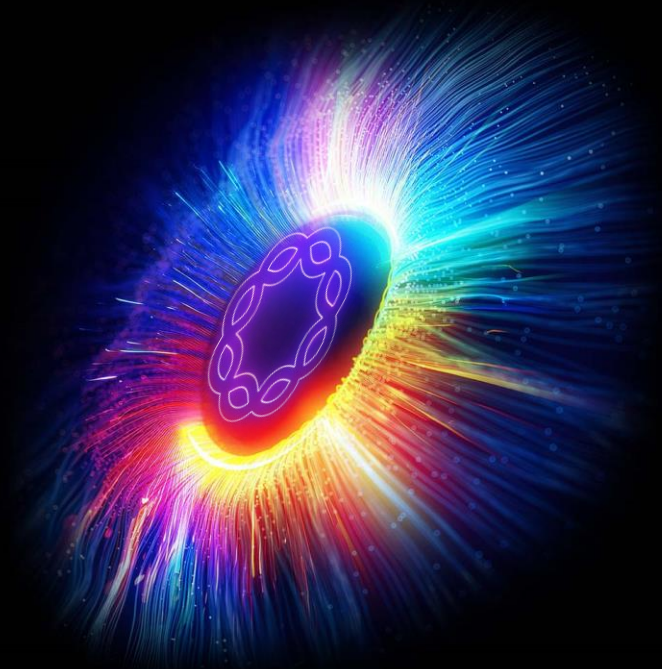
Offices Converted / Collapsed

5M+

Lines Groomed



ribbon
INSIGHTS




Ribbon Solutions Addresses ALL Metaswitch Products

Metaswitch Product	Function	Ribbon Product
MetaSphere CFS	Softswitch / Application Server	Virtual C20 or AS
MetaSphere EAS	Business Services: Voicemail, AA, etc.	Voicemail
MaxUC	Hosted Unified Communications Solution	AS + Phone App + 3rd Party UC Collaboration
Perimeta SBC	SBC	SBC SWe/ SBC CNe
Clearwater Core IMS	IMS Voice Core	Cloud-Native IMS
MetaSphere QCall	STIR/SHAKEN & robocall mitigation	Call Trust portfolio
Media Gateway	UMG2510, UMG3510, Telco Bridges Media Gateways TMG 800	G5, G6, G9 & Telco Bridges TMG
MetaView	Management & Analytics	Analytics, RAMP, LEAP

Ribbon has successfully replaced Metaswitch products for multiple customers!

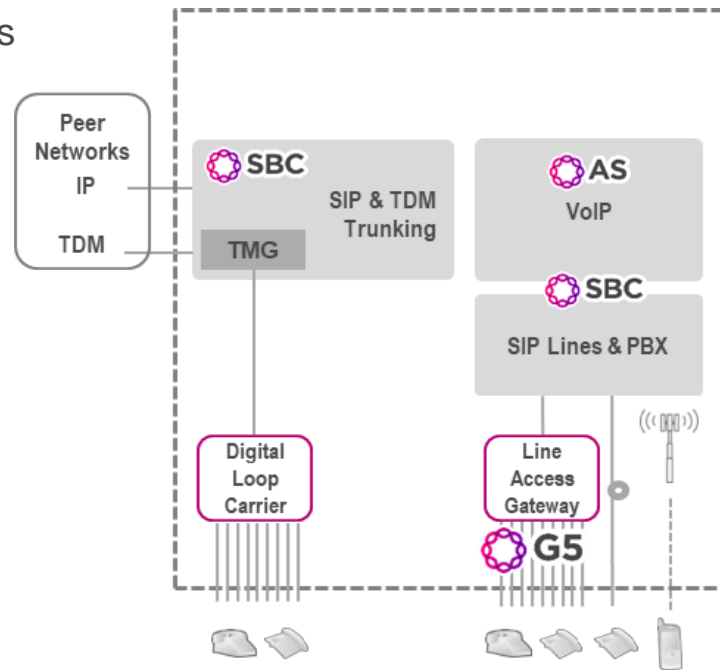
Ribbon SBC Core Portfolio for Metaswitch Perimeta

- Unrivaled scale and performance
- True microservices architecture
- Multiple deployment options (cloud native, virtual or appliances) - same code base
- Automation - GitOps delivery, provisioning & test
- Certified with all leading UCaaS providers
- JITC and FIPS-140-2 certified for US Govt.
- High availability options
- Ribbon Application Management (RAMP) common across all SBCs

Customer Defined Sessions High Availability	 SBC CNe Cloud Native	
Customer Defined Sessions High Availability	 SBC SWe Virtual	
150,000 Sessions High Availability	 SBC 7000 Service Provider	
75,000 Sessions High Availability	 SBC 5400 Large Enterprise	

Ribbon Application Server + SBC for MetaSphere CFS and EAS

- Ribbon Application Server (AS) for SIP telephony services and enhanced SIP trunking
 - Rich business and residential features
 - Supports Calix or Adtran SIP OLT/ONTs and G5 SIP GW ++
 - Simple Phone App across all platforms
 - Teams, Zoom or 3rd Party UC for collaboration services
 - Native uniform call distribution services
- SBC SWe Core for Access and Peering
- Voicemail, End Point Point Provisioning & Portals
 - Business Voicemail/Auto-Attendant, Notify Plus, Firebar etc.
 - Device management (SIP provisioning)
 - Customer and end-user portals
- Additional Partnership Solutions to Enhance Solution
 - 3rd Party for Contact Center
 - TelcoBridges for GR-303 and SIP-ISUP GW



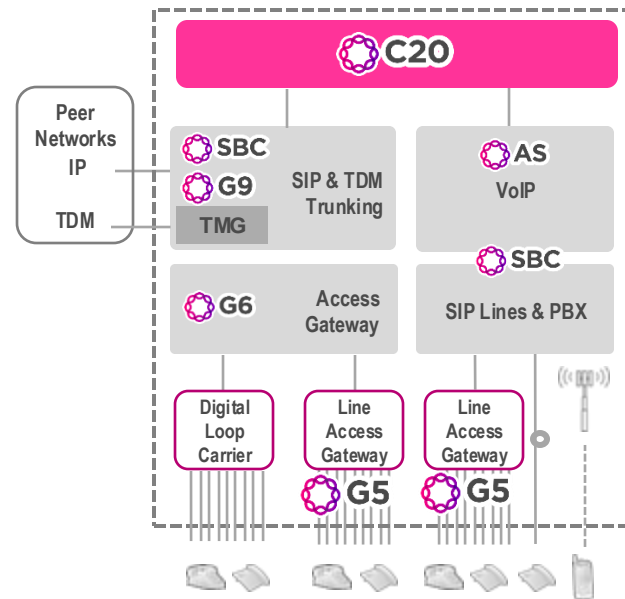
Ribbon C20 for MetaSphere CFS & Gateways

Ribbon C20 Softswitch

- Supports both legacy last mile (TDM/Copper) and replacement access solutions (SIP/IP)
- Full suite of line and trunk features from years of investment and deployments worldwide
- Fully virtualized providing a low-cost platform to transform Class 4 & 5 networks

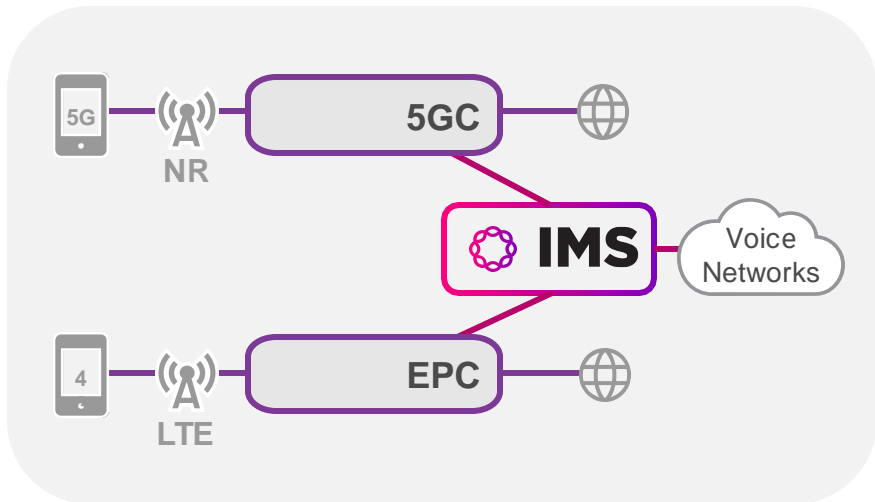
Gateway Solutions for every need

- Application Server provides SIP Lines and PBX access capabilities, including all the advanced capabilities AS provides
- G9 large-size gateway providing legacy trunk access
 - T1/E1, OC-3/STM-1, 60k DS0 ports
- G6 mid-size gateway providing legacy lines and trunks access
 - T1/E1, STS-1/DS3, OC-3/STM-1, DS-512, 32k GR-303 lines
- G5 line access gateway up to 768 POTS lines
 - SIP and GR-303 capable, BRI & P-Phone available



Ribbon Cloud-Native IMS for Metaswitch Clearwater Core

A Common IMS Voice Core for 4G VoLTE and 5G VoNR

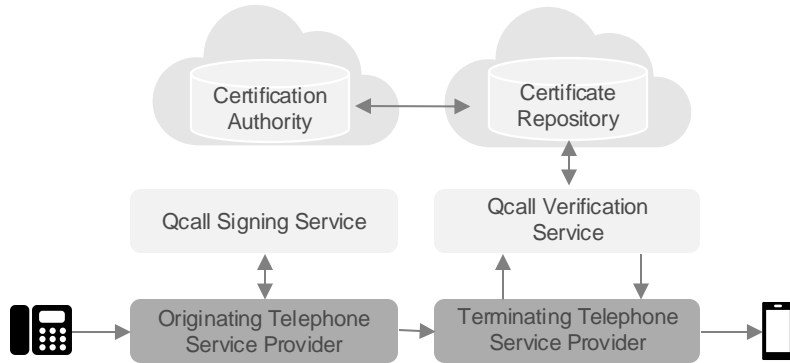


- ✓ Rapid solution for MNO voice continuity
- ✓ Single, multi-generation investment
- ✓ Seamless and easy “drop in” IMS core
- ✓ Automated Scaling base on traffic usage
- ✓ Cost-effective and energy efficient
- ✓ Carrier grade scale and reliability
- ✓ Combined with Ribbon Analytics for network monitoring and troubleshooting
- ✓ Supported by Ribbon services and support teams worldwide

Ribbon Call Trust MetaSphere QCall STIR/SHAKEN

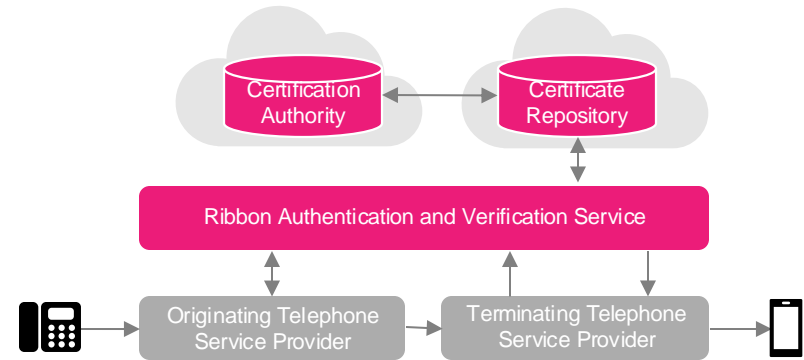
metaswitch

MetaSphere QCall



ribbon

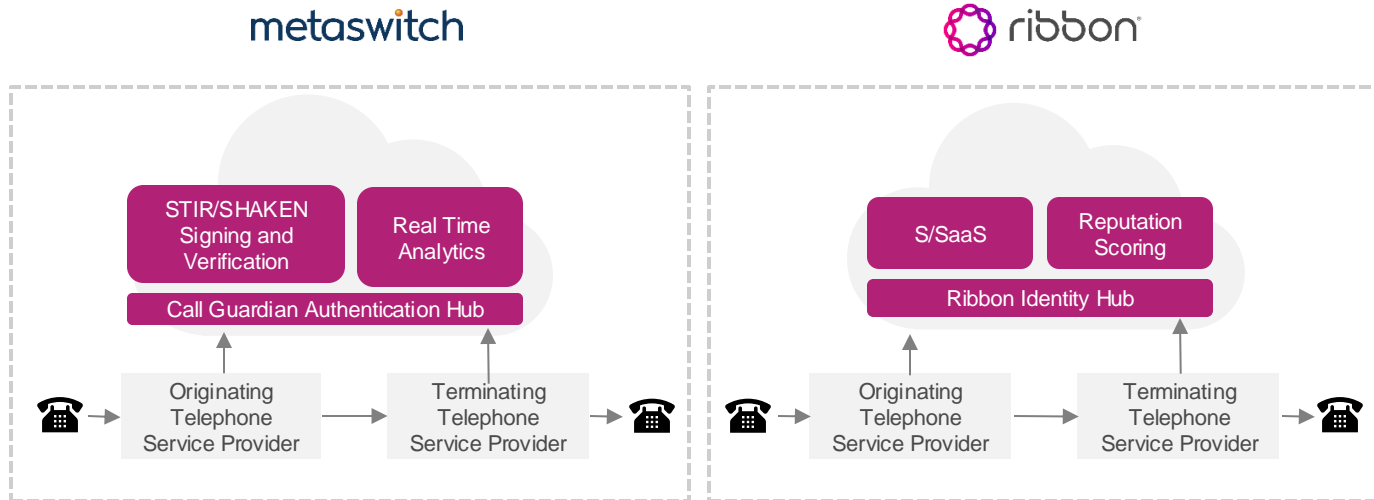
Ribbon Call Trust



Ribbon Call Trust replaces MetaSphere QCall with full regulatory compliance:

- 1 Signing and Verification Services
- 2 Authorized Certification Authority
- 3 Advanced Call Treatments
- 4 Deploy in your data center or use Ribbon's Managed Service Cloud

Ribbon Call Trust for Metaswitch Call Guardian Authentication Hub



Ribbon replaces:

1. Ribbon Identity Hub for Metaswitch Call Guardian Authentication Hub
2. Ribbon S/SaaS for Metaswitch STIR/SHAKEN Signing and Verification
3. Ribbon Reputation Scoring for TNS Real Time Analytics

Services for:

- Multiple fraud scenarios
- Advanced call treatments
- Sophisticated data sources for accurate real time scoring

Ribbon Call Trust® replaces Call Guardian Authentication Hub (a combination of STIR/SHAKEN® service from Metaswitch and Real Time Analytics from TNS).

Ribbon Intelligent Automation for Metaview NMS

metaswitch

 ribbon

Metaview

Metaview Explorer

Element Mgmt

Metaview SAS

Call Trace and Debug

Metaview Web

Subscriber Mgmt

Metaview Director

Troubleshooting and Centralized Notifications

Ribbon Intelligent Automation

Ribbon RAMP

Centralized Element Mgmt

Ribbon Discover with Ladder

Call Trace and Debug, Auto-Troubleshooting, Notifications, Planning, Customer KPIs

Ribbon Analytics

Service Assurance, Fraud Mitigation, and Network Monitoring

Ribbon LEAP, NetProtect, Planner, Fraud Protect

Anomaly Detection

Ribbon replaces:

1. Ribbon RAMP for Metaview Explorer
2. Ribbon Discover with Ladder for Metaview SAS and Metaview Director
3. Ribbon Analytics for Metaview Director

Plus, Ribbon LEAP, NetProtect, Planner, and Fraud Protect for anomaly detection and worry-free deployments